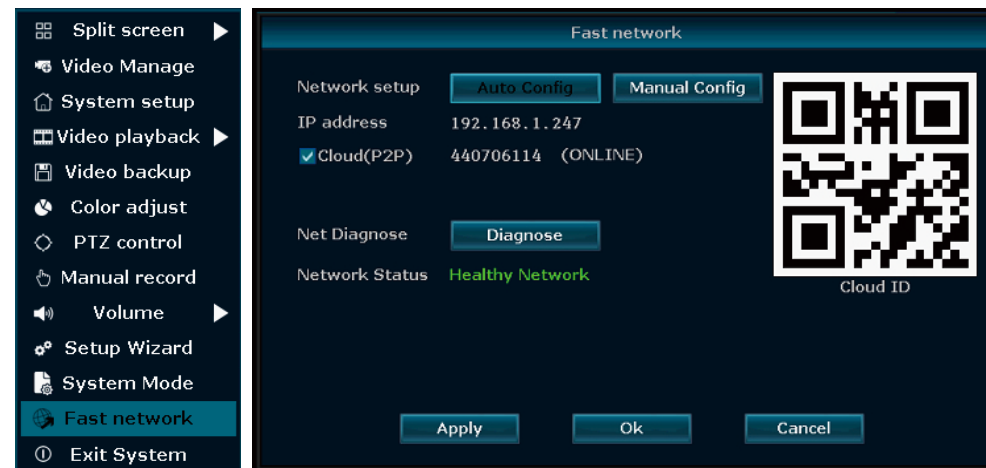


VR-NVR USER MANUAL

Tips: User manual and more software (include CMS), please go to <http://www.dvr163.com/help/download.php> to download

1 Fast network

Step: Right click mouse in main menu → Fast network → Choose Auto Config → Click OK
If want to manual config, input IP address, click diagnose. If shows healthy network, indicates the connection of Internet is good. If shows network anomaly, plz process according to the clew.
(Ensure your device has accessed network)



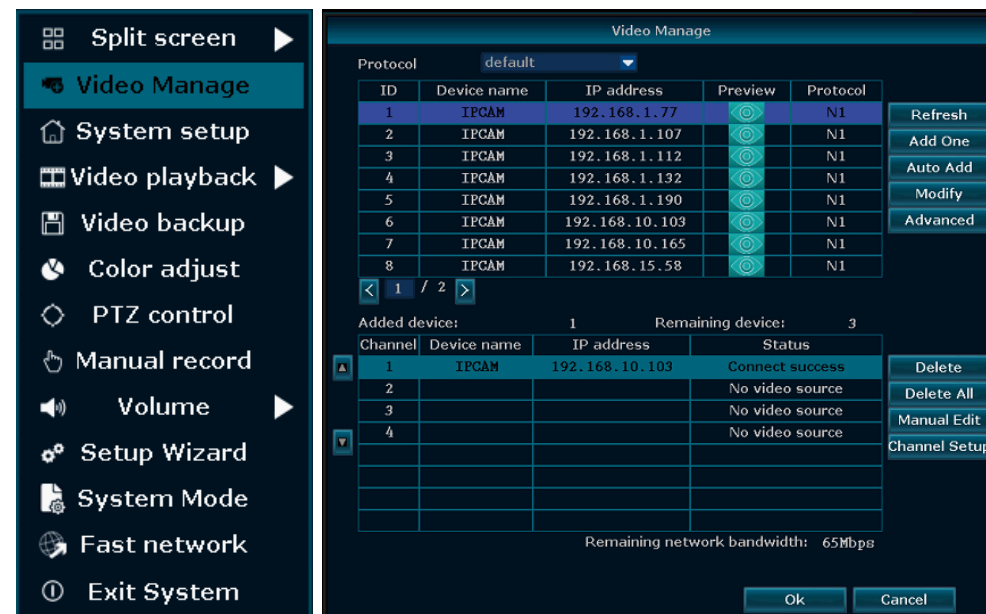
2 IPC Set UP

Step: Right click mouse in main menu → Click Video Manage → Click Refresh to search IPC → Two way to add IPC

- ① Click the IPC searched, then click add, IPC will add to target channel
- ② Click Auto add (Auto add can add all the IPC searched to channel list)

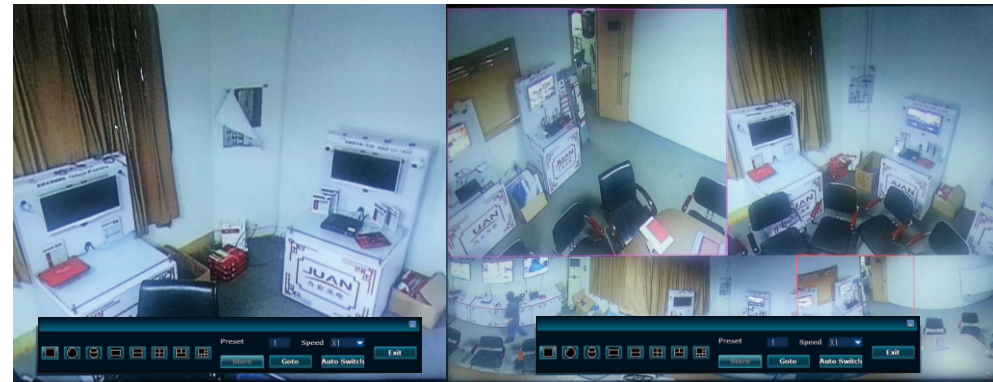
Delete channel: Delete channel information

Edit channel: Manually revise channel parameters (such as password of user name) Click OK to finish operation.



3 Preview of VR Camera

Double click the image on main interface → choose different preview mode



Step 1: default preview mode

Step 2: corridor mode

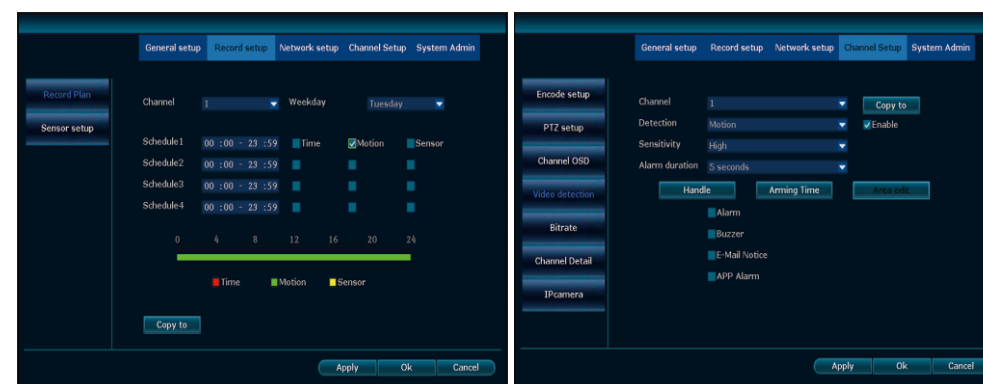
Step 3: plane full view positioning in 3 split screen mode



4 Video detection

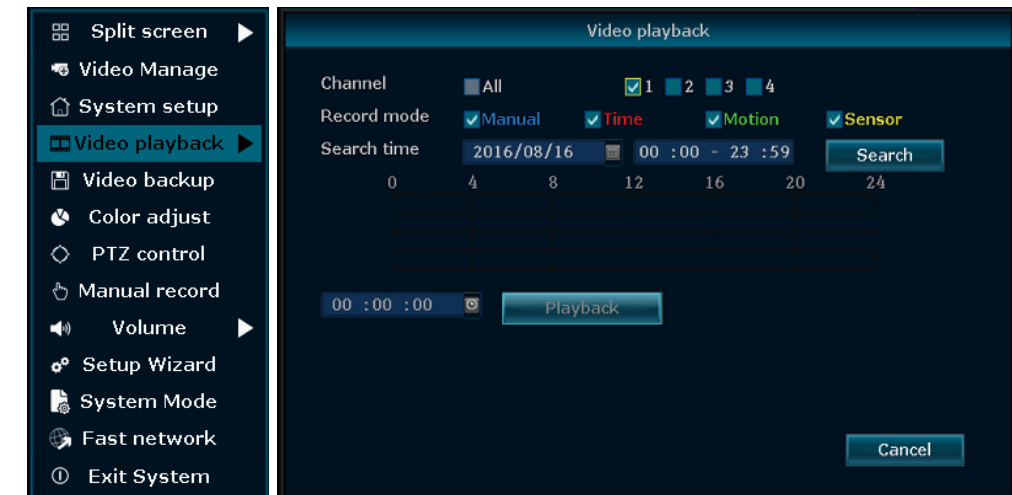
Step 1: Right click mouse in main menu → System setup → Record setup → Record plan → choose motion → choose all → click Copy to → click OK to save setting

Step 2: Right click mouse in main menu → System setup → Channel setup → choose Video detection → choose motion → click Enable → Click OK



5 Video Playback

Step: Right click on main interface → "video playback" → choose "channel" → choose "record mode" → setup "search time" → click "search", click timeline to choose time → click "playback" to check recording file.



▲ Panorama mode



▲ Electronic PTZ positioning in 6 split screen mode

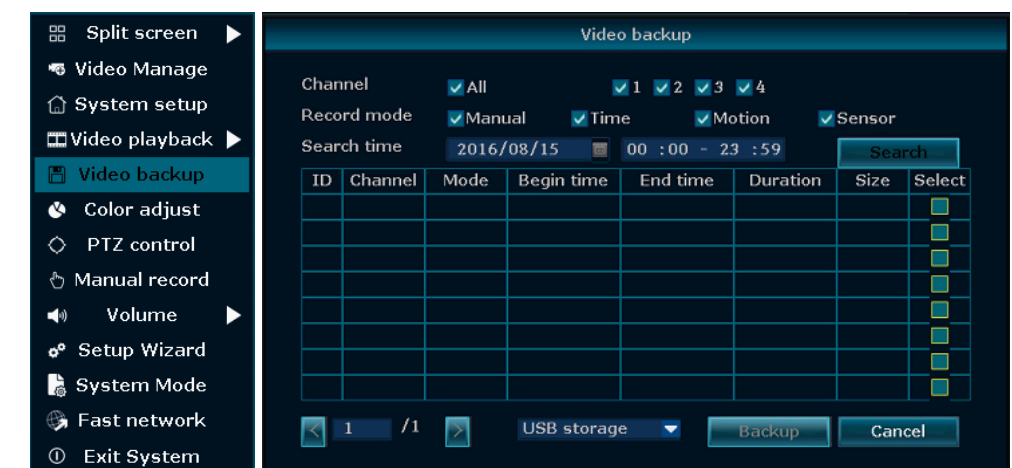
▶ Plane full view positioning in 3 split screen mode



6 Video backup

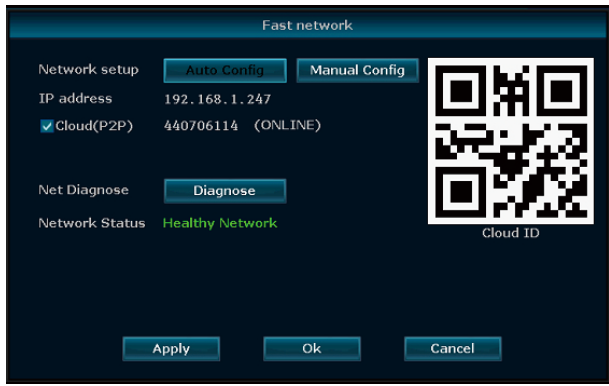
Steps: Right click mouse in main menu → Video backup → choose channel No. → choose Record mode → In search time, input beginning time and end time → click search, recording will come out → choose the video which need to backup → click video backup.

Tips: Support 32G U disk backup maximum, recording file will be packed every one hour.

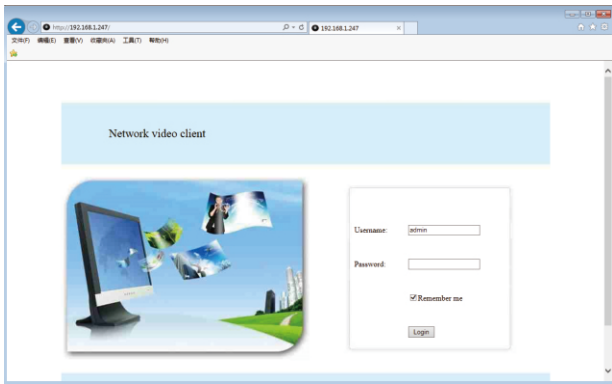


7 / Access in LAN

Step1: Quick Networking→check the IP address of the device

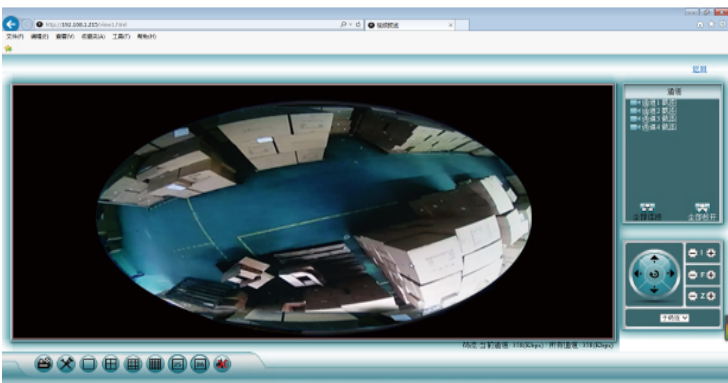


Step2: the correct web port needs to be put if web port is changed, such as web port changed to 1111, then input **http://192.168.1.247:1111**



Step3: Once access successfully, you can get the video

Tips: Please make sure video recorder and computer are in the same network segment



8 / Access in WAN

Step1: Right click mouse in main menu→Quick Networking→check the ID of the device



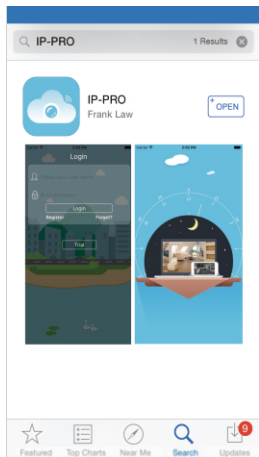
Step2: Input <http://www.dvr163.com/on> in IE browser, input ID, user name and password, click log in
Step3: Once access successfully, you can get the video
Tips: Video quality and fluency depend on the upload speed of video recorder and download speed of computer, each channel needs above 30KB



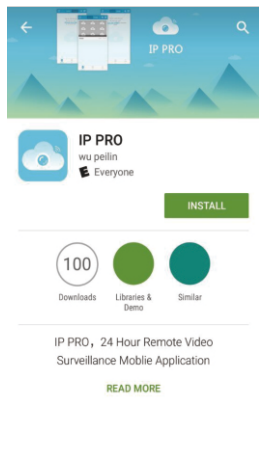
9 / Mobile application download and installation

No. 1: Go to <http://www.dvr163.com/download/indexm.php?p=ippro> in mobile browser, enter download page, click install to download and install APP.

No.2: Please scan the QR code in manual to download APP.



iPhone APP



Google play APP



APP download

10 / Esee mobile application(IP Pro)-Add device

Step1: Register and log in
Step2: Enter main interface
Step3: Add device and back to main interface
Step4: Added successfully. Click channel No. to get video
Step5: Remote playback

