



QUICK OPERATION GUIDE

★ Before operating this unit, please read these instructions carefully, and save them for future use.

Packing list

(Please refer to real products)

Open the packaging, make sure the VR camera (P1/P2/P3/P4/P6 /P720)is intact, and compare with the figure below to confirm whether the accessories are complete.



VR camera x1



Quick operation guide x1

The Introduction of the appearance

(Picture only for reference, Standard based on object)



Description	Introduction
LED light	The device will mend the infrared light automatically when there is low light.
SD card slot	Support Micro SD card for local storage (Max 128GB). To guarantee the normal use of SD card , before insert the SD card, please make sure its file system is FAT32 and there is more than 256MB space available.
Reset Button	Using reset pin to press the reset button 10 seconds from the reset hole.

Operation Pre-read

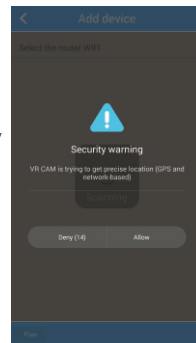
Start Device

Connect the device to power cable and start it, and then do WIFI configuration after the device starts successfully.

Special Note:For Android phone users, in order to facilitate the configuration, APP will obtain the WIFI information surrounding. So the cellphone will ask whether to allow the application to obtain Relevant permissions. Please click Allow.

LED indicator (if the device is with cable):

- LED lights flash (0.5s)--STA Pairing mode
- LED indicator flashes slowly (2s)--AP mode
- LED indicator lights on--configure successfully



APP Download and Installation

Note: To download the APP--VR CAM, IOS system version should be IOS 7.0 or above, Android system version should be Android 4.0 or above.

1 Installation on IOS/Android phone

Users can scan the QR code blow and download the APP for free, or search "VR CAM" on APP store and Google Play and then download and install.



VR CAM



APP

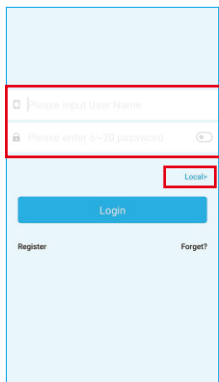
◆ Software Operation

② Log in and Local

There are "Local" and user mode on the software. Users without a registered account can click "Local" and try this APP

Note:

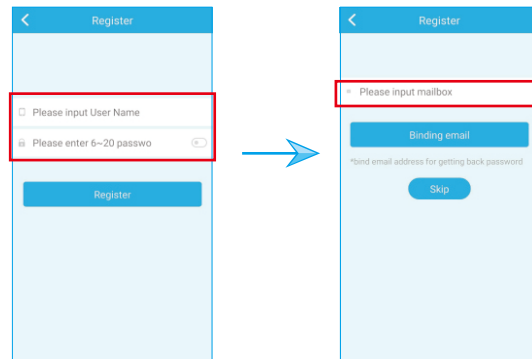
- Data in "Local" will be stored at local, once lost and can't be restored.
- Log in mode: Data, such as the device added or grouped by users, is managed by server, which won't be lost even to delete all data on the cellphone. As long as users re-install the APP and log in the old account, all data will be restored for some auxiliary functions such as device status notification and alarm notification.



3

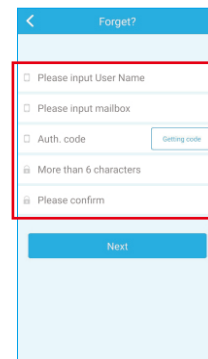
① Registration

Users without accounts have to take several seconds to register one. Click "Register", enter an account and password (6 to 12 numbers or letters). Enter the email address, and bind the email address (system will send an email to this email address). Log in the email address and click the link to complete registration (please follow this step, otherwise users can't get password back through emails).



② If Users Forget Password

If users forget the password and need to get it back, click "Forget password" and enter the interface. Enter account, email address and verification code (click "get verification code" and system will send a verification email and users can check the verification code).

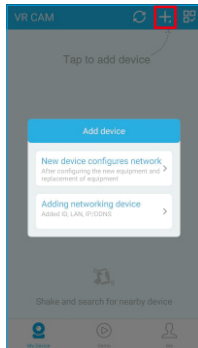


4

◆ Add Device

Enter account and password, and get “my device” interface;

Note: Due to the limitation of IOS system, some functions on Android version can't be reached on IOS version. Take Android cellphone for example, users can shake the cellphone after log in and then automatically search and add the device (IOS version don't have this function); Please click “+” on top right corner and add the device, then show up two adding ways;



③ New Device Configures network

This mode is for new device configuration

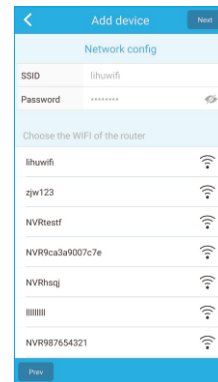
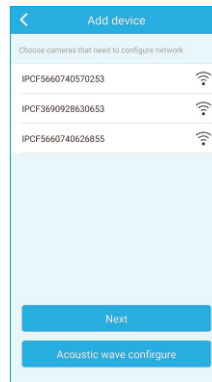
① AP connection mode: All device factory mode is AP mode. When click “new device configures network”.

First: Choose the WIFI of the device (WIFI name is the same as ID number. Please check ID number on the bottom of camera);

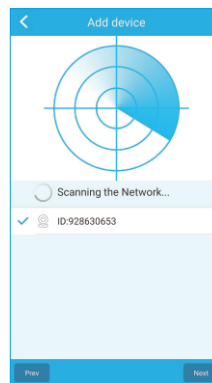
Second: Choose the WIFI at home or at office and enter password (IOS system can't search the WIFI nearby. Users have to enter WIFI name and password by themselves);

Third: After WIFI setting the device will prompt “wireless connection succeed”. Then cellphone connected to WIFI at home or at office can search the device. If the device is already connected the network, users can remotely monitor through 4G network.

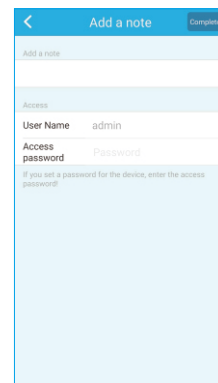
Fourth: Fill in the remark of device and password and then finish adding operation.



First



Third



Fourth

② Acoustic wave configuration:

Our default mode is AP mode (Within one hour after the device starts, it can be AP mode as well as acoustic wave configuration). Users have to press reset button (on the back of camera) for 3-5 seconds to acoustic mode and then begin configuration.

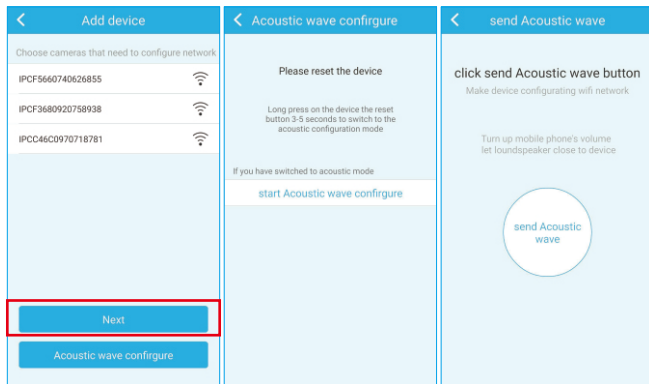
First: Click "acoustic wave configure", and then click "start acoustic wave configure";

Second: Choose the WIFI at home or at office and enter password (IOS system can't search the WIFI nearby. Users have to enter WIFI name and password by themselves);

Third: Click "send acoustic wave", put cellphone close to the device.

When hearing "connection is successful", click next on top right corner;

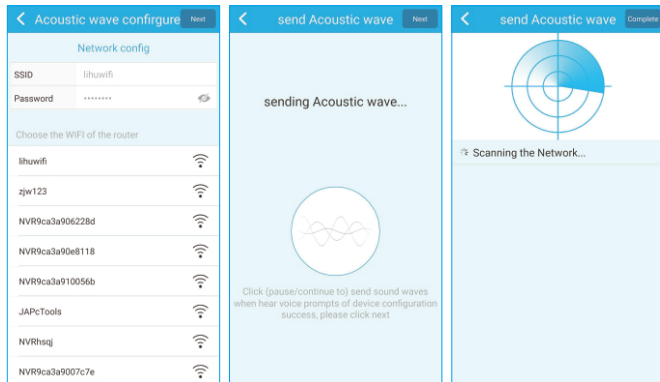
Fourth: APP will scan the device automatically. And then click "OK" after the device is scanned successfully.



1.Click "acoustic wave configure"

2.Click "start acoustic wave configure"

3.Enter WIFI info



4.Click "send acoustic wave"

5.Click "Next"

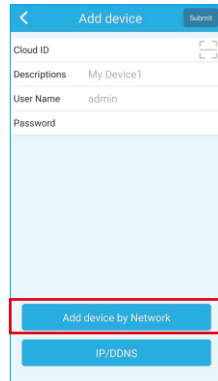
6.Choose the device and click "OK"

④ Add the device already connected the network

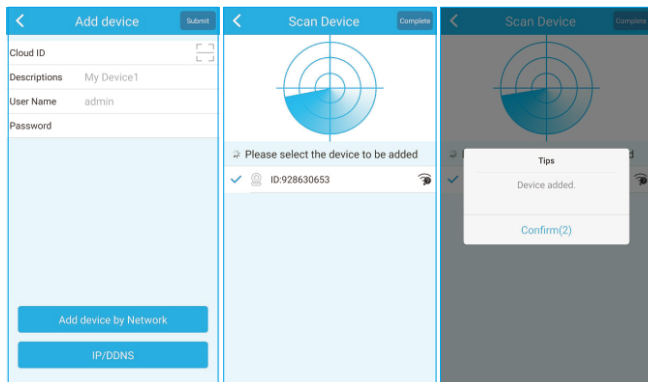
This mode is to add the device which is already configured and connected to network into APP and view the video.

① Cloud ID adding:

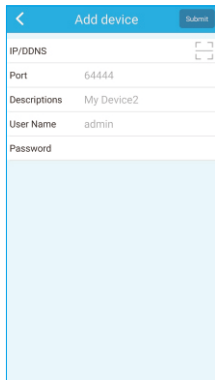
Before leaving factory, a sticker with ID number will be attached on the camera. This ID number is the cloud ID. Users can add the device by entering ID number or scanning the bar code.



- ② **Adding networking device:** Cellphone connects to WIFI. And then scan and add the device. Scan the device and choose the device and click "OK". (LAN scanning requires the device to connect to local WIFI by what is said above. If the device has wired network port, then users can connect it with network cable and then scan the device).

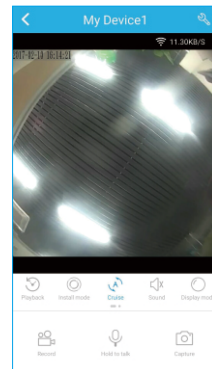


- ③ **IP/DDNS adding:**
Add by entering the IP of device.
IP address of the device can be checked by IP searching software or on NVR.



◆ Check Video

After adding the device, there will be a screenshot of the video on the interface. Click screenshot and then enter into real-time viewing. If the cellphone can't connect to the device, it will show offline. This exclamation mark ⚠ means there is no password for the device. Click it and can setup password.



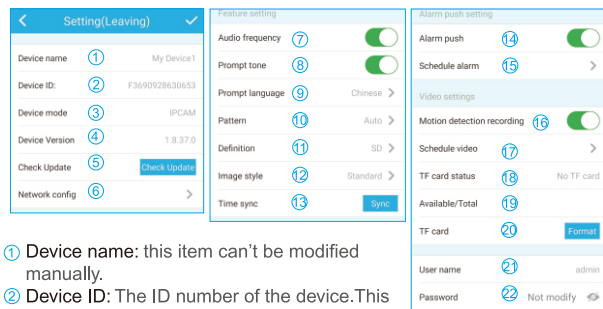
① Button Function List

	Camera setting	Setup camera		local recording	Click "record" and then record the video, click again to stop recording and save the video file.
	Remote playback	Playback video		Talk	Press this button tight to talk
	Installation mode	Installation mode includes 2 types: 1). Ceiling mode : fisheye camera should be installed on the ceiling become panoramic camera downward. 2). Wall mode : VR camera is installed on the wall to become panoramic camera horizontally.		Screenshot	For screenshot
				My device	Added device
				Demo	Demo
	Voice	Open or close the voice		Me	Account setting
					Refresh
	Review mode	Users choose the modes according to their needs. Different products use different modes.			Add device
	Cruise	Open it and the image will rotate automatically			Change arrangement mode

② Gesture Operation Illustration

- Two fingers touch the screen and move outward to enlarge the image;
- Two fingers touch the screen and move inward to narrow the image;
- Single finger double clicks the screen to enlarge or narrow the image;
- Position the cellphone to enlarge or narrow the image (only support Android cellphone with gyroscope);
- Single finger slides left/right to rotate the image.

③ Camera Setting Illustration



- ① **Device name:** this item can't be modified manually.
- ② **Device ID:** The ID number of the device. This item doesn't need to fill in. Device ID will be automatically configured according to device type.
- ③ **Device type:** The type of the device. This item doesn't need to fill in. It will be automatically filled in according to device type.
- ④ **Device version:** Can check the software version of the device.
- ⑤ **Check update:** Click and check if there is new software version. If there is, can click and update directly to achieve OTA upgrade of the device. If the version is already the newest, there will be a prompt.
- ⑥ **Network configuration:** Configure WIFI of the device, connect it to network
- ⑦ **Audio:** Open or close the sound of the device.
- ⑧ **Prompt tone:** Open or close the prompt tone of the device.
- ⑨ **Prompt language:** Can change the language to Chinese or English according to users' needs.

- ⑩ **Pattern:** Change the pattern of auto, day or night.

- ⑪ **Definition:** Choose the definition of the video.

- ⑫ **Image style:** Setup color effect of the image.

- ⑬ **Time sync:** Synchronic time system.

- ⑭ **Alarm Push:** When the alarm function (motion detection, human body infrared detection etc) of the device (VR camera, NVR etc) is triggered, the device will push the alarm message to our server, then server will push the message to mobile terminals (cellphone or tablet) which bind push service and receive alarm push.

Users Can receive alarm push message on their mobile devices. Which alarm message can be pushed is decided by the device. Must open motion detection function when open alarm push function.

- ⑮ **Schedule alarm:** Can choose the period of time of motion detection triggered by device according to users' needs. Support several period of time.

- ⑯ **Motion detection recording:** When there is moving object in the image, the device will record the video and save it to memory card.

- ⑰ **Schedule video:** Record the video according to the recording time setup by users.

- ⑱ **TF card status:** Show the TF card is normal or not.

- ⑲ **Available/Total storage:** Show the total and available storage capacity of the TF card.

- ⑳ **TF card format:** Click it and format the TF card. The procedure is about 3-5 minutes, and won't be blocked by other operation.

- ㉑ **User name:** Default user name is admin.

- ㉒ **Password:** Modify the password of admin user by filling in new password. Blank means no modification.

◆ Playback

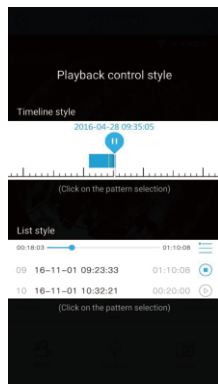
Click the button of remote playback

Precondition of VR camera remote playback:

- ▶ Make sure the device is already time synchronized;
- ▶ Insert the suitable TF card into the device;
- ▶ Already setup recording schedule or motion detection is triggered.

None of these three conditions can be omitted and then can achieve remote playback function of the device.

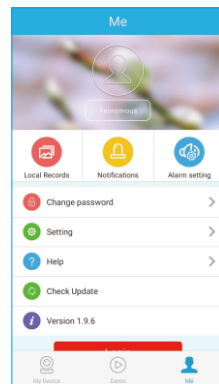
- ① **Pattern choice of playback video:**
Can choose display mode of progress bar in the first time to check recording file. This setting can be modified on the main interface “Me—setting—playback modes”



APP Setting

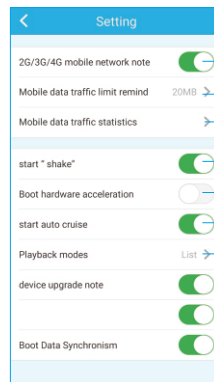
On this interface, users can setup the function of APP.

Local Records	Check screenshot/recording file
Notifications	Check alarm message (have to log in first)
Alarm setting	Setup to push alarm message (have to log in first)
Change password	Change password
Check Update	Check APP version
Version 1.9.6	Present APP version
Log in/out button	Log in/out button
Setting	Setup some functions, as picture shown below:



- ② **Illustration of function button on playback interface**

	Back to previous step
	Choose the date of playback
	Back to preview mode
	Record the video and save
	Snapshot present image and save
	Choose installation mode
	Choose video preview
	Open/close recording sound
	Open/close auto cruise
	Progress bar: use two fingers to enlarge the progress bar to see more detailed time. Use one finger to slide on progress bar and click this button , and can play the recording video at this period of time.



Function introduction



A new kind of HD network camera.



Support connecting by Wifi.



Support motion detective, once there is motion happening in surveillance area, alarm will be triggered.



Support electronic PTZ.



Support network cloud service, support mobile remote view.

FAQ

Q: When adding device by LAN or serial number, it warns "device is not online" or "device is not registered".

A: 1. Please make sure the internet which the device is in could be access to internet normally, what's more, the router has opened the DHCP function;

2. If you have changed the network parameters of the device manually, we suggest to press RESET button for 10 seconds and make the device to restore factory settings.

Q: The device is online, and also there is motion happening in surveillance area, but why no receiving alarm information on mobile phone?

A: 1. Please make sure that the device IP from APP is running on the mobile, and motion detection function has been open.

2. If you use Apple mobile, please open the "message notification" function during the IOS operation system "setting up—notice".

Q: Does the device support USB and charger for power supply?

A: Not available. Please use the power supply to offer the stable power.

Q: Why it reports "memory card fault" when insert the SD card?

A: 1. The device only supports the FAT32 file system, and storage couldn't be above 128GB. Please confirm the file system type and whether the SD card capacity is beyond the normal use scope.

2. The SD card appears some damage, the device couldn't read and write as usual, which needs to reformat by computer before using.

Q: Why the playback is intermittent?

A: Due to the limited use life of the SD cards, the continuous video will largely reduce the SD card life, when the device detects the moving images, the intermittent condition could save storage space and prolong the SD card life.

Specification

Spec	1MP	1,3MP	2MP	3MP	5MP
Sensor Resolution	1280×720	1280×960	1920×1080	2048×1536	2592×1944
Lens	Fisheye lens				
PTZ	Horizontal: 0°~360°, Perpendicular: -90°~90°				
Video compression	H.264				H.264/H.265
Network Interface	RJ45 10M/100M Adaptive Ethernet Port/wifi 802.11b/g/n				
Storage	Support Micro SD card				
Day & Night	Auto				
IR distance	5-10M (different according to the environment)				
Minimal Illumination	0.1 Lux @(F2.0, AGC ON), 0 Lux with IR				
Power consumption	3W (MAX)				
Power supply	DC 12V 1A				
Work temperature	-10℃~50℃ <=95% with out condensation				