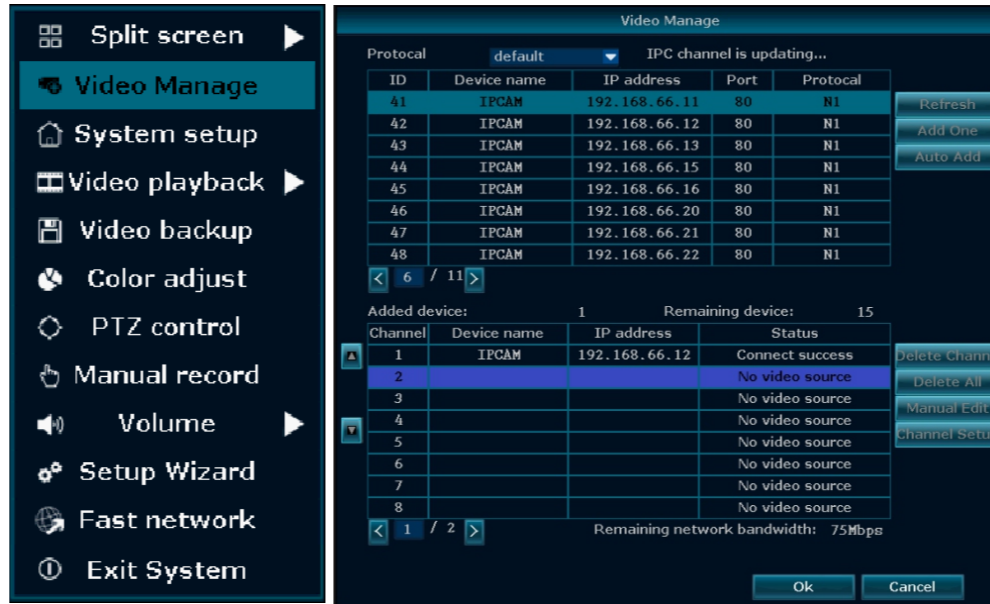


# NVR USER MANUAL

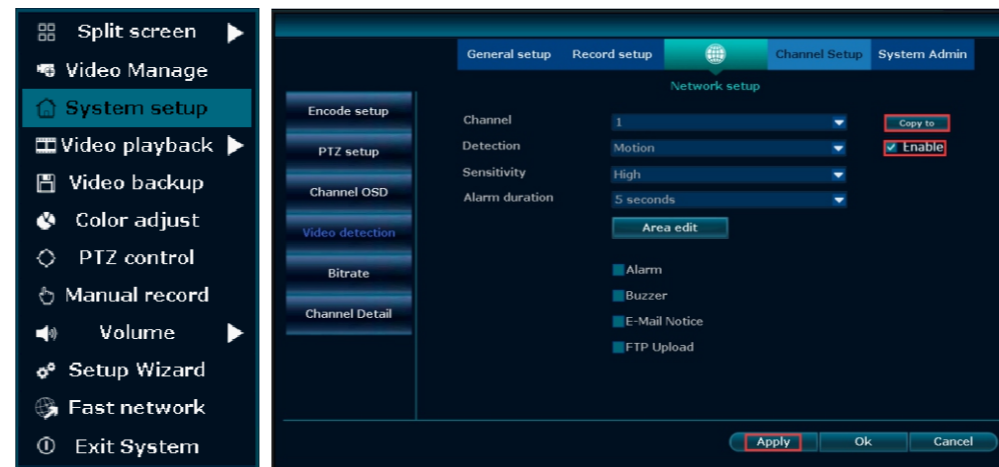
**Tips:**User manual and more software(include CMS), please go to <http://www.dvr163.com/help/download.php> to download



## 3 Video Detection

**Step 1:** Right click mouse in main menu→System setup→Channel setup→choose Video detection→choose motion→click Enable→Click OK.

**Step 2:** Right click mouse in main menu→System setup→Record setup→Record plan→choose motion→choose all→click Copy to→click OK to save setting.

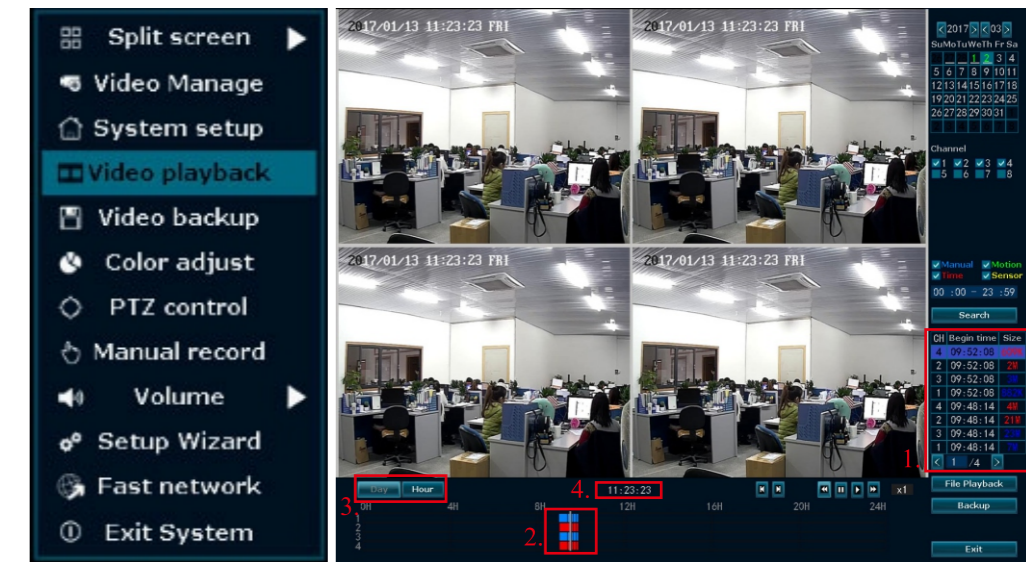


## 4 Video Playback

**Steps:** Right click mouse in main menu→Video playback→choose date, channel, record mode→click Search→then can view playback file.

**Warm prompt:**

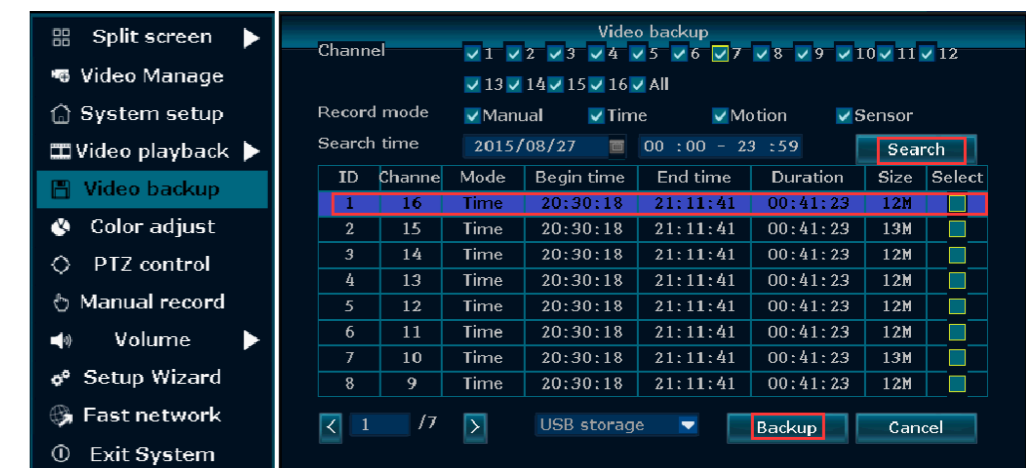
- illustration for playback button: ⏮ rewind, ⏪ playback previous seconds: ⏩ playback following seconds, ▶ play, ⏸ pause: ⏭ fast forward x2,x4,x8
- play file: Choose the recording file in file list, as number "1" shown in picture. Choose one of the recording, click "play" to play to recording file;
- video backup: Choose the recording file in file list, as number "1" shown in picture. Insert the U flash disk, click "video backup" to backup the file;
- timeline: click "date" and "time" at left bottom to check the timeline of recording, show number "2" shown in picture;
- on the timeline with recording file, left click the mouse, then can playback the file.



## 5 Video Backup

**Steps:** Right click mouse in main menu→Video backup→choose channel No. →choose Record mode→In search time, input beginning time and end time →click search, recording will come out→choose the video which need to backup →click video backup.

**Tips:** Support 32G U disk backup maximum, recording file will be packed every one hour

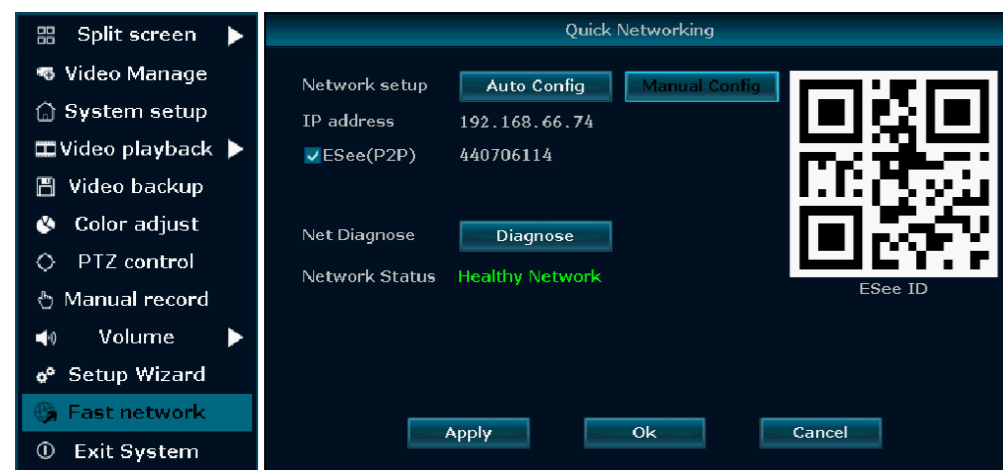


## 1 Fast Networking

**Step:** Right click mouse in main menu→fast networking→Choose Auto Config →Click OK

If want to manual config, input IP address, click diagnose. If shows healthy network, indicates the connection of Internet is good.

If shows network anomaly, plz process according to the clew.(Ensure your device has accessed network)



## 2 IPC Set UP

**Step:** Right click mouse in main menu→Click Video Manage→Click Refresh to search IPC→Two way to add IPC

- Click the IPC searched, then click add, IPC will add to target channel
- Click Auto add(Auto add can add all the IPC searched to channel list)

**Delete channel:** Delete channel information Edit channel: Manually revise channel parameters(such as password of user name) Click OK to finish operation.

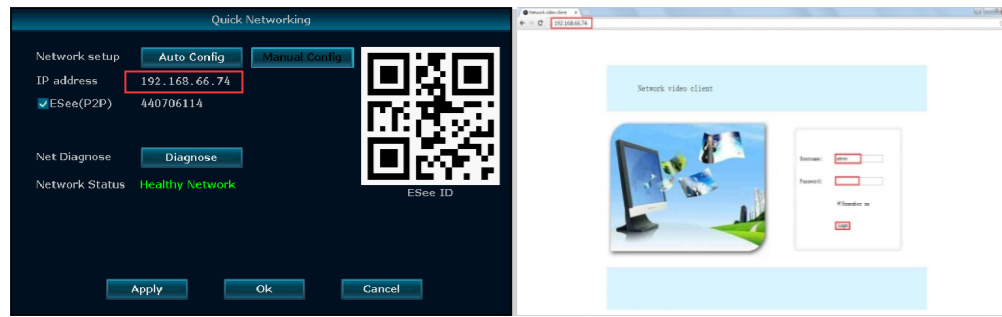


## 6 Access In LAN

**Step 1:** Fast Networking→check the IP address of the device.

**Step 2:** Access the computer in same LAN, input video recorder's IP address and port(if port is 80, no need to input) in IE browser or any other browser.

Then it will access in LAN log in web page, input user name and password, click log in.



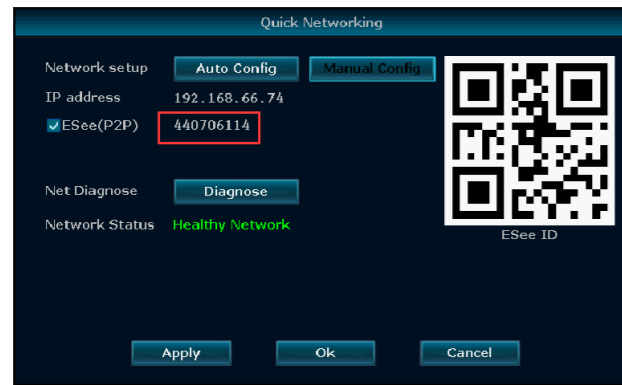
**Step 3:** Once access successfully, you can get the video.

**Tips:** Please make sure video recorder and computer are in the same network segment.



## 7 Access In WAN

**Step 1:** Right click mouse in main menu→Fast Networking→check the ID of the device.



**Step 2:** Open the IE browser, enter the [www.e-seenet.com](http://www.e-seenet.com) in the address bar.

Then it will access log in web page, input ID, user name and password, click log in.



**Step 3:** Once access successfully, you can get the video

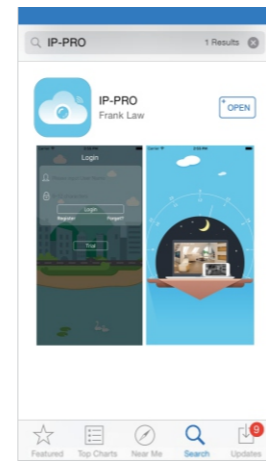


**Tips:** Video quality and fluency depend on the upload speed of video recorder and download speed of computer, each channel need above 30KB.

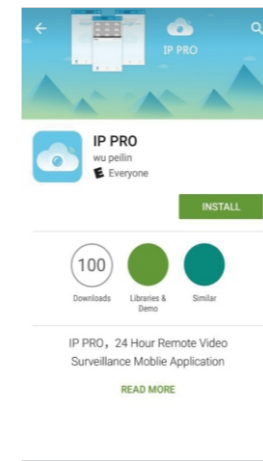
## 8 Mobile application download and installation

**No. 1:** Go to <http://www.dvr163.com/download/indexm.php?p=ippro> in mobile browser, enter download page, click install to download and install APP.

**No.2:** Please scan the QR code in manual to download APP.



iPhone APP



Google play APP



APP download

## 9 Esee mobile application(IP PRO)-Add device

**Step 1:** Register

**Step 2:** Enter device interface

**Step 3:** Add device

**Step 4:** Added successfully. Click channel No.to get video

**Step 5:** Remote playback

