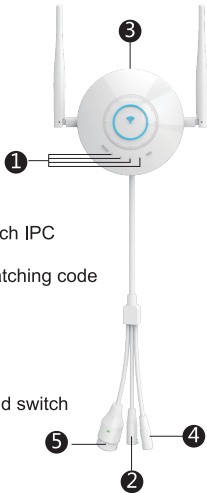


1 Product appearance



- ① Indicator light— indicate the signal status of each IPC
- ② Match-code/reset button—press 3s and start matching code
- ③ Speaker—warning voice for match-code status
- ④ Power—supply power
- ⑤ Network port—match code, connect to NVR and switch

2 Product feature

- * Support wireless AP hot-spot
- * Support wireless repeating
- * Support 2.4G wireless IPC
- * Support one-key matching-code wireless IPC
- * Support IPC signal strength indicator
- * Support voice alert function under matching code state
- * Support waterproof IP66

3 Dimension & specification

WIFI	802.11b/g/n 2.4G dual antenna	
Support how many Cameras at max	4 wireless IPC	
Indicator light number	5 LED indicator, 4 for IPC signal state, 1 for NVR connection state	
Interface Type	1 x RJ45 100Mbps network interface	match code with IPC, Video output
	1 x wire with reset button	One key to match code, reset
	1 x 12V power supply	Supply power for the router
POE function	Built-in (Optional)	
Waterproof Class	IP66	
Lightning protection class	Standard IEC61000-4-5	
Power supply	DC 12V	
Dimension	100x100x57 MM	
Weight	170 g	

4 Operation guide

1. Wired matching code

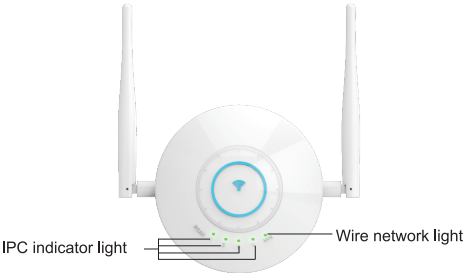
Power the router and cameras, then use a network cable to connect router and camera Press the button of reset key on router for 3 second to match code according to voice warning. When voice indicates the success of matching code, it means the camera has been matched code successfully. (To restore factory settings by pressing the button 5 seconds). (as shown in Figure 1)



▲ Shown in Figure 1

2. Router indicator light

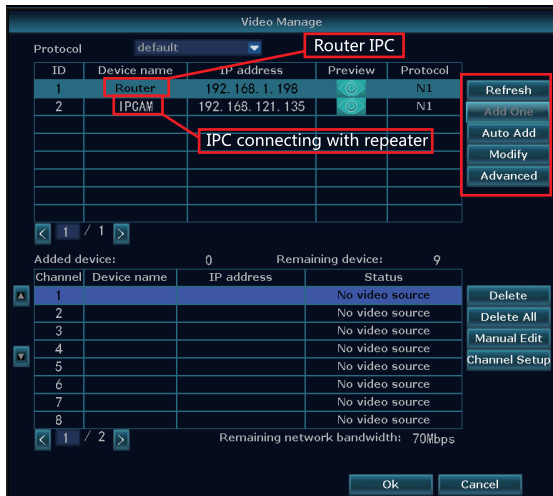
This router has 5 LED indicator totally, the right one is wire network indicator, Light-on means router connects with wire network. 4 lights on left side indicate numbers of wireless cameras connected. 4 lights are on while 4 cameras are connected successfully.(as shown in Figure 2)



▲ Shown in Figure 2

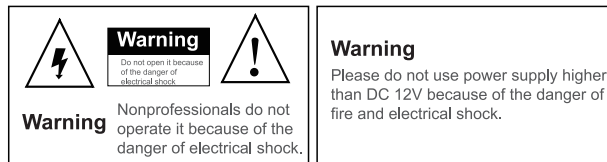
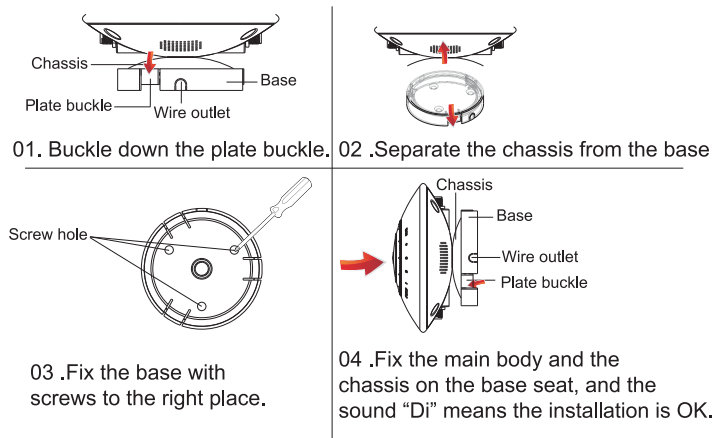
3. connection to NVR

After matching code successfully, use a network cable to connect the router and NVR. Right click the mouse- > video management -> refresh, search wireless IPC and IP address of router (router IP defaults to 192.168.1.198), click one key to add or add “to add wireless IPC”, If display of different segments, please use one key to add. (as shown in Figure 3)



▲ Shown in Figure 3

5 Quick Operation Guide



IPC Router User Manual

IPC Router—make “wireless IPC” be “wired IPC”, more convenient for application.

Quick Instructions Guide

