

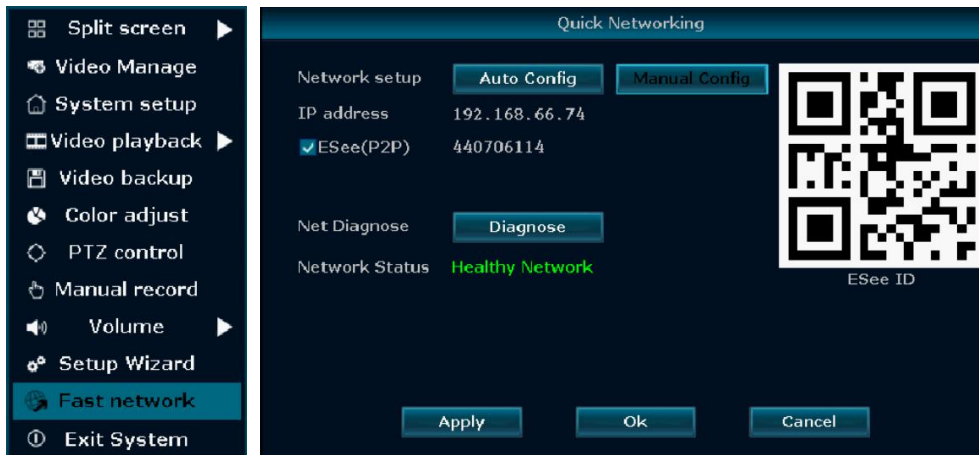
# Digital Wireless Surveillance System

## QUICK START GUIDE

### 1. Fast Network

**Step:** Right-click mouse in main menu → “Fast Network” → “Auto Config”, and click “Ok”.

If want to manual config, input IP address and click diagnose. If it shows “Healthy Network”, the connection of internet network is ok. If shows “Network anomaly”, please process according to the clew. ( Please make sure device has accessed network )



### 2. Camera Set up

**Step:** Right-click mouse in main menu → “Video Manage” → “Refresh” (to search camera).

Two ways to add camera:

#### ❶ Add one camera

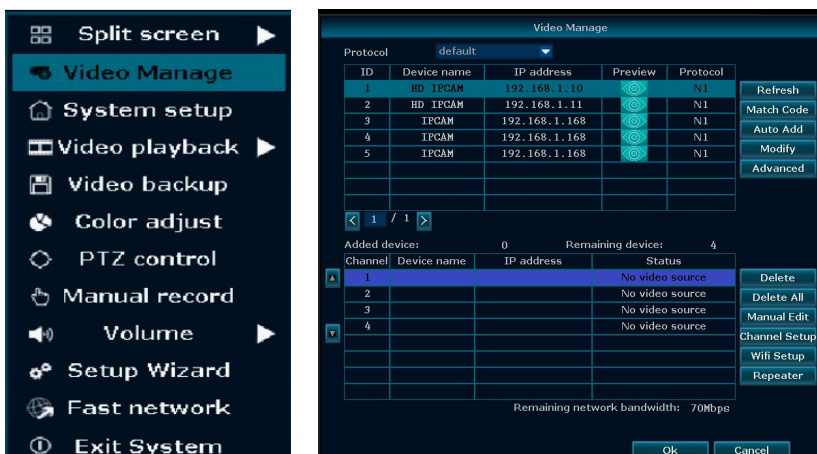
Connect the camera with NVR via RJ45 network cable, click searched camera → “Match Code” to add camera to selected channel.

#### ❷ Add multiple cameras

Connect all cameras with NVR via router, click “Match Code” to all searched camera to channel list.

“Delete Channel”: delete selected channels.

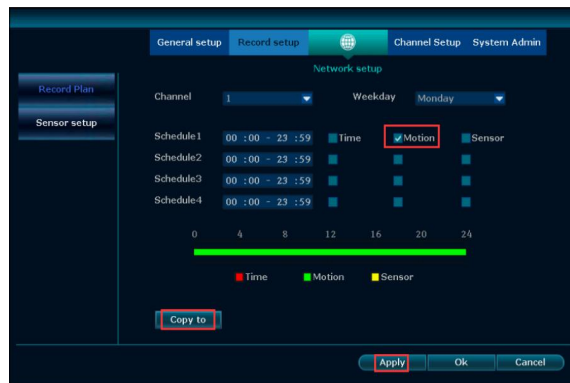
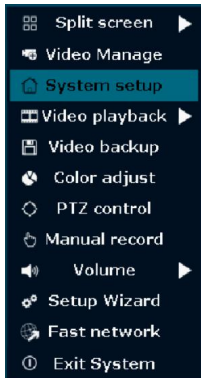
“Manual Edit”: manually revise channel parameters (such as user name, password), Click “Ok” to save the setting.



### 3. Video Detection

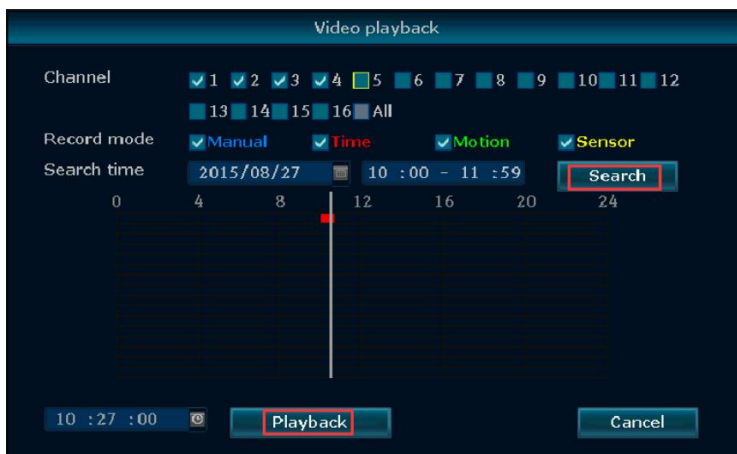
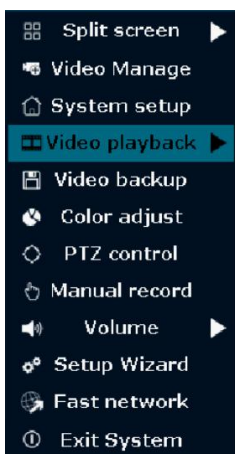
**Step 1st:** Right-click mouse in main menu→System setup→Channel setup→video detection→motion  
→Enable→Ok to save setting.

**Step 2<sup>nd</sup>:** Right-click mouse in main menu→System setup→Record setup→Record plan→motion→all  
→Copy to→Ok to save setting.



### 4. Video Playback

**Step:** Right-click mouse in main menu→Video Playback→choose “Channel No”→choose “Record mode”→Under “Search time”, input beginning time and terminal time→click “search”, all recording will come out. Drag time bar to demanded time→click “playback” to start.

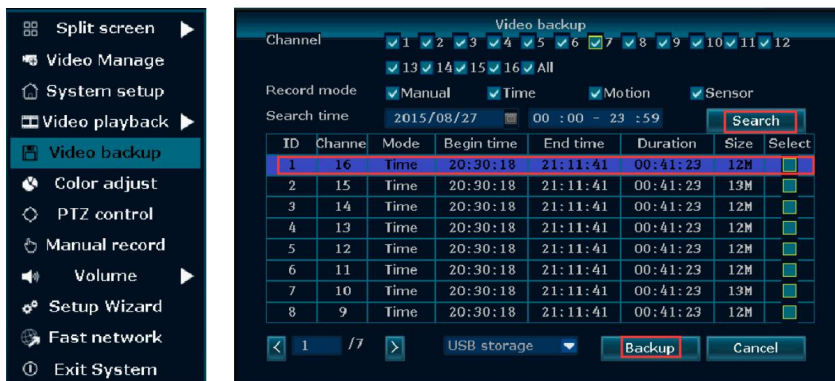




## 5. Video Backup

**Step:** Right-click mouse in main menu → Video backup → choose “channel No” → choose “Record mode” → Under “Search time”, input beginning time and terminal time → click “search”, all recording will come out → choose video which need to backup → click “backup”.

**Tips:** Support maximum 32G flash disk. Video will be packed every one hour.



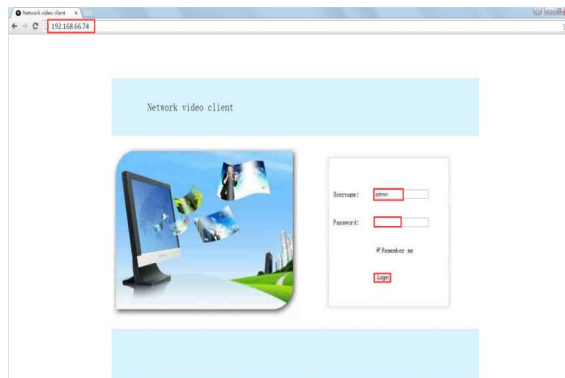
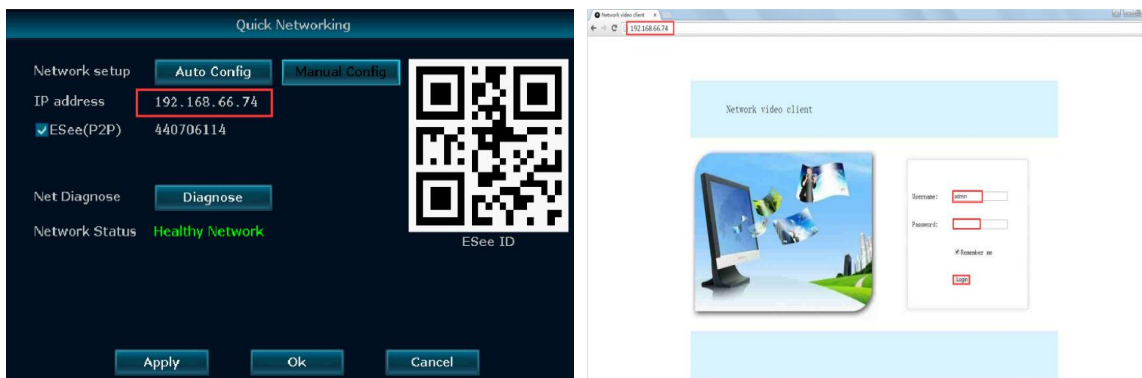
## 6. Access in LAN

**Step 1st:** Fast Network → click the IP address of the device

**Step 2nd:** Input device IP address and port(if default is 80, no need to input) in IE or any browser on computer in the same LAN to visit web page. Enter user name and password to login.

**Step 3rd:** Once login successfully, video surveillance in LAN can be achieved.

**Tips:** Please make sure device and computer are in the same network segment.





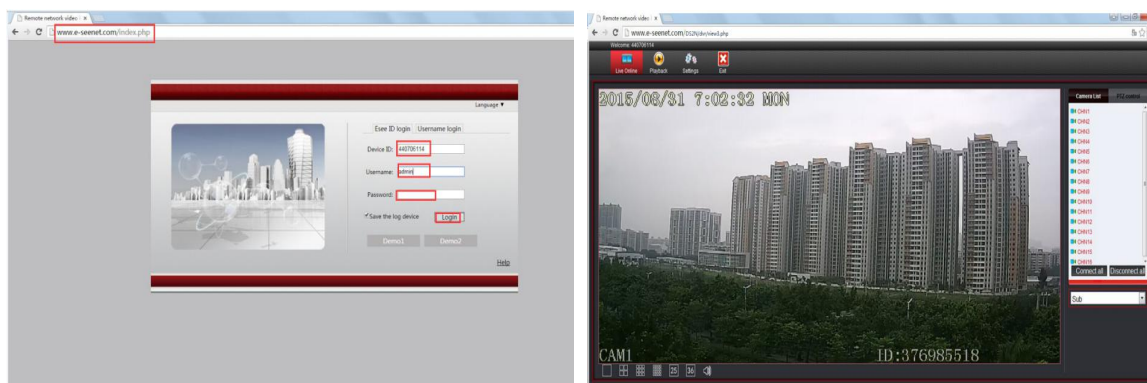
## 7. Access in WAN

**Step 1st:** Fast Network→click the IP address of the device

**Step 2nd:** Input [www.e-seenet.com](http://www.e-seenet.com) in IE. Enter ID, user name and password to login.

**Step 3rd:** Once login successfully, video surveillance in WAN can be achieved.

**Tips:** Video quality and fluency depends on broadband upload speed of device and broadband download speed of computer. Each channel need above 30KB.



## 8. APP Installation for Android Mobile Phone

**Method 1:** Right-click on mouse under main menu→Setup Wizard→you will find a QR code, and scan the QR code to download the APP for android.

**Method 2:** Enter [www.e-seenet.com/help/download.php](http://www.e-seenet.com/help/download.php) in mobile browser to enter download page to download APP.

**Method 3:** Enter [www.e-seenet.com](http://www.e-seenet.com) in PC browser to find QR code. Scan QR code for Android phone to download APP. Or click “help”→”download”→”mobile client software” to save the APP in computer. Then copy into phone.



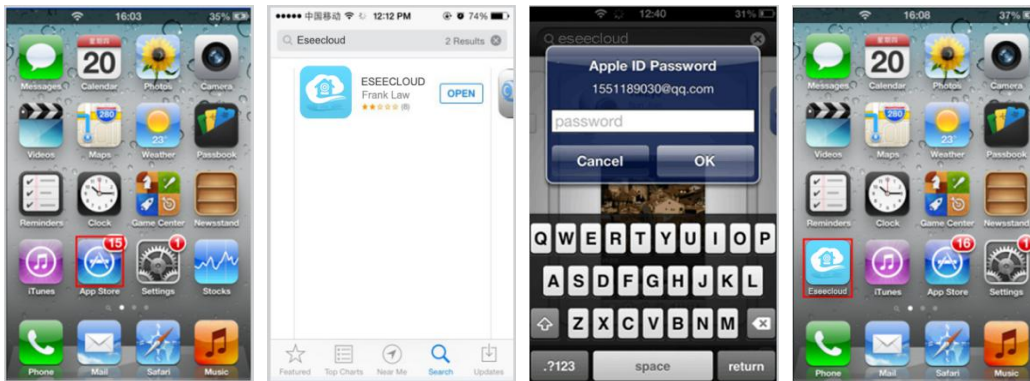
## 9. APP Installation for iPhone iOS

**Step 1st:** Go to App Store

**Step 2nd:** Search Eseecloud

**Step 3rd:** Input Apple ID and password to verify

**Step 4th:** Click download



## 10. Add device on Esee Mobile Application(Eseecloud)

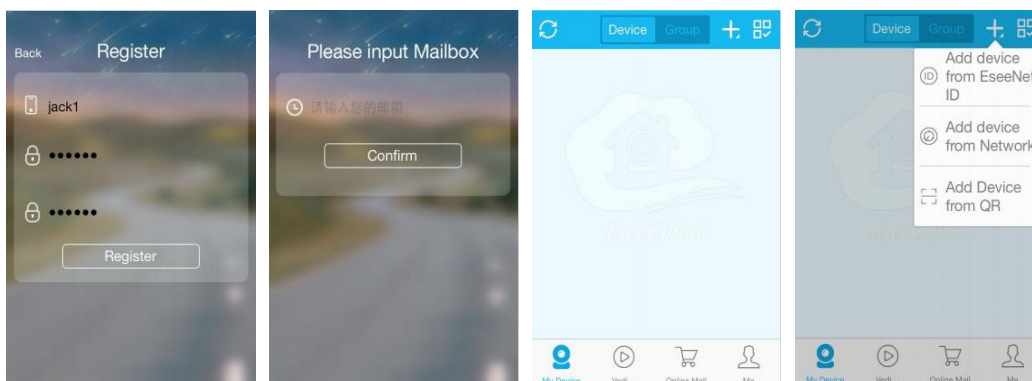
**Step 1st:** Register a new user and login

**Step 2nd:** Enter the APP main interface

**Step 3rd:** Add device and back to main interface

**Step 4th:** Click to pre-view

**Step 5th:** Remote view



<

Add device

Submit

EseeNet ID

Device descriptions1

User Nameadmin

Password

Device

Group

+

NVR

NVR

NVR

NVR

NVR

NVR

NVR

NVR

NVR

ID:44070611

1

Edit

Delete

My Device

Vedi...

Online Mail

Me

<

1

2015/08/31 15:11:05 MON

1/2

ID:37695518

Controller

Playback

Image

Video

Stream

Back

Playback

Channel 1

2015/08/26 00:11:59

ID:37695518

2015-08-26 00:11:59

00:0001:0002:000

+

-

Image

Video